



Best Practices For Collision Repair

Facts you need to know



Trust the Nissan Certified
Collision Repair Network

Collision.NissanUSA.com

1

Don't wait until it's too late

Although we hope you never experience vehicle damage, accidents do happen. Being prepared ahead of time can help minimize the aggravation that can accompany auto collision repairs.

Nissan has developed this brochure to help you navigate the collision repair process with your insurance company and the collision center. It also will show you the important benefits of having your vehicle repaired with new Genuine Nissan Parts. These parts help preserve the function of the vehicle's safety systems as a whole, as well as the overall appearance, helping to maintain your vehicle's value.

In addition, there are factors to consider when purchasing insurance that will help make the repair process less of a hassle. Let's hope this is information you never need. However, the time to think about it is before an accident—when you purchase your insurance policy. After an accident, it's too late.

2

Collision repair relationships

Q: What are the three primary relationships involved in collision repair?

A:

- You and the collision center
- You and the insurance company
- The collision center and the insurance company

Q: Why are these relationships important?

A: Understanding each of these relationships helps you to make decisions that best protect:

- You and your family
- The performance of your vehicle's safety systems in the event of a future collision
- The resale value of your vehicle

In those three relationships, **YOU** are the most important person. **YOU** have rights you should understand before you purchase your vehicle and drive it for the first time.

3

Select the right insurance policy

Choosing the right insurance company and policy can make all the difference when it's time for repairs. Making a quick decision when choosing a policy can cause major headaches later.

Q: Why shouldn't I just shop around and buy the least expensive policy?

A: If you have an accident, you will likely get what you pay for when it comes to your insurance policy. Many people begin their auto insurance policy search thinking they will never have an accident and, therefore, are looking for the least expensive policy they can buy. The least expensive policy, however, could result in a less satisfactory claims experience.

Q: If I'm in an accident, isn't my Nissan vehicle automatically repaired with parts from Nissan?

A: Not necessarily. When a new Nissan vehicle is built, all the components are Genuine Nissan Original Equipment parts. Nissan has invested millions of dollars in the research, development, and engineering of those parts. They are extensively tested as an entire vehicle system to deliver the intended level of safety and performance. Unfortunately, nearly all auto insurance policies allow for the use of alternatives.

Q: How can I ensure that repairs are made with Genuine Nissan parts?

A: Before you buy insurance, read the policy and know what you are purchasing. Ask your insurance representative about parts and other restrictions prior to purchase. That way you will pay for the protection you want at the price you're willing to pay.

When you purchased your new Nissan vehicle, you bought an original. You can help keep it original by ensuring that your insurance company uses new Genuine Nissan Parts.

4

Select the right collision center

OK, so the unthinkable has happened and your vehicle is involved in a collision. Now the collision repair process begins.

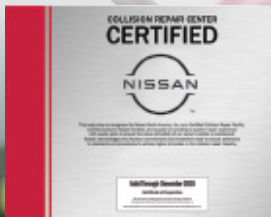
Q: Who is the first person you should call if you are in an accident and need to repair your vehicle?

- **Your dealership?**
- **Your insurance company?**
- **Local collision center?**
- **Your friends and family?**

A: Our advice is to talk to **ALL** of them before you select a collision center for repairs. When doing this, carefully consider the benefits of each:

Your dealership – They were the original source for your vehicle and are your trusted source for maintenance and repairs so they are a good place to start. Ask if they manage or can direct you to a nearby collision center that is a member of the Nissan Certified Collision Repair Network. The Nissan Certified Collision Repair Network has been developed by Nissan North America as a dynamic competitive program to recognize and distinguish Dealer-owned and independently owned and operated collision center that meet or exceed standards for repair work, training, equipment and delivery of customer service.

Your insurance company - If filing a claim, your insurance company will need to be called to begin the claims process. They may recommend a shop in your area that THEY have a relationship with.



Local collision centers - Check out several. Consider how they handle your inquiry over the phone. Ask them about their facilities, equipment, and capabilities. Ask them what part types they use and about shop and technician certifications.

Your family and friends – Word of mouth could be one of your best sources for finding a reputable collision center. Sometimes the best advice you can get is from a family member or friend who has gone through the process.

Q: I've heard about insurance companies having their own direct repair shops. Is that a good choice?

A: If your insurer directs you to one of its direct repair facilities, this may be a good choice, but you should check it out prior to taking your vehicle there for repairs. If you are not comfortable with your insurance company's recommendation, you still have the right to go to another collision center of your choice.

Ultimately, any collision center you select is repairing **YOUR** vehicle for **YOU**. You have the right to select the collision center and choose the parts used to repair your vehicle. Your insurance company pays the bill on which you and the collision center have agreed, although you may have to pay any price difference if your insurance policy allows for low-cost alternative parts. But all this should be decided and agreed to before repairs begin, not after the vehicle is returned to you.



5

Select the right parts

The right parts are critical to your vehicle's long-term performance and your peace of mind.

Q: Why is it so important to have my vehicle repaired with new Genuine Nissan Parts?

A: Today's vehicles use more advanced high strength steels, exotic metals, and composite materials than ever before. Nissan vehicles also include highly advanced crash avoidance and safety system technologies. It is critical for these systems to be repaired with parts that will deliver the intended level of form, function, performance, and safety our engineers originally specified.

The only way to be certain you are getting original equipment performance is to use new Genuine Nissan Parts. Unfortunately, many customers tell us they are not aware that anything other than new Genuine Nissan Parts would be used to repair their vehicle after an accident.

Q: Do I have the right to choose which parts are used in my repairs?

A: Absolutely. A reputable collision center will discuss with you in detail the part types specified to repair your vehicle before it starts repairs. This is required by law in many states. You always have the right to choose the type of parts to repair your vehicle, but your insurance company may make you pay the price difference if your policy allows for the use of low-cost alternatives.



New Genuine Nissan Parts Can Help Return Your Vehicle to Pre-Accident Condition

Q: How can I tell what types of parts are being specified for my repairs?

A: Have the collision center or insure explain any acronym or comment on the repair estimate you don't understand before you sign the repair authorization. These are the different types of parts you may encounter.

Genuine Nissan Parts

Sometimes called "OEM Part" on the estimate, these parts are designed by Nissan and produced to the same specifications and tolerances as the parts used on the vehicle when it was manufactured. They all meet stringent requirements for fit, finish, structural integrity, and corrosion protection as well meeting Federal Motor Vehicle Safety Standards (FMVSS) which are a higher level of testing that aftermarket suppliers are not required to meet.

When Nissan designs and builds a new vehicle, each part works together to form systems that are rigorously tested to meet strict Nissan and government standards. When a non-genuine part is introduced, the characteristics of the overall system can be altered, potentially affecting the safety, drivability, or appearance of the vehicle.

Trust the Original. Genuine Nissan Parts.

5

Select the right parts, continued

Aftermarket Collision Parts

Sometimes called "Aftermarket Part" on the estimate, these copies are made by companies other than Nissan or its OEM suppliers and may not be made of the same material or to the same tolerances and specifications as Genuine Nissan Parts. As a result, some new aftermarket crash parts may not be of the same quality or have the same performance characteristics as OEM parts.

Salvage Parts

Sometimes called "Salvage," "Used," "LKQ," or "Recycled" parts on the estimate, these parts are removed from salvage yard vehicles. Quality concerns may exist with salvage parts because the source, condition, and durability of the parts are not known. In some cases the part could be a salvaged aftermarket part.

Remanufactured/Reconditioned Collision Parts

Sometimes called "Reman" or "Recon" parts on the estimate, most of these collision parts are removed from salvage yard vehicles or from the scrap heap out behind collision centers and reconditioned. Like salvage parts, quality concerns may exist with these parts because the source, condition-and durability of the parts are not known. Collision parts that are commonly reconditioned are bumpers, fascias, wheels, and lighting.

Making sure you know the difference in part types and approve of the parts being specified for your vehicle—before the repairs begin—can help lead to a more satisfying repair experience.



New Genuine Nissan Parts Can Help Return Your Vehicle to Pre-Accident Condition

6

It's all about value

Carefully consider the use of new Genuine Nissan Parts for collision repair.

Q: Why?

A: You receive many benefits when you use new Genuine Nissan Parts:

Better Repair Appearance

New Genuine Nissan Parts provide a precise fit because they are produced to the same specifications as the new vehicle. This ensures that body lines, contours, and gaps are the same as when your vehicle was originally manufactured.

Faster Repair Time

The use of new aftermarket, salvage or reconditioned parts may take more time to install and may require modifications to achieve an acceptable fit, which may ultimately increase order and repair times. Also, new Genuine Nissan Parts are readily available at thousands of Nissan dealerships.

Improved Structural Integrity

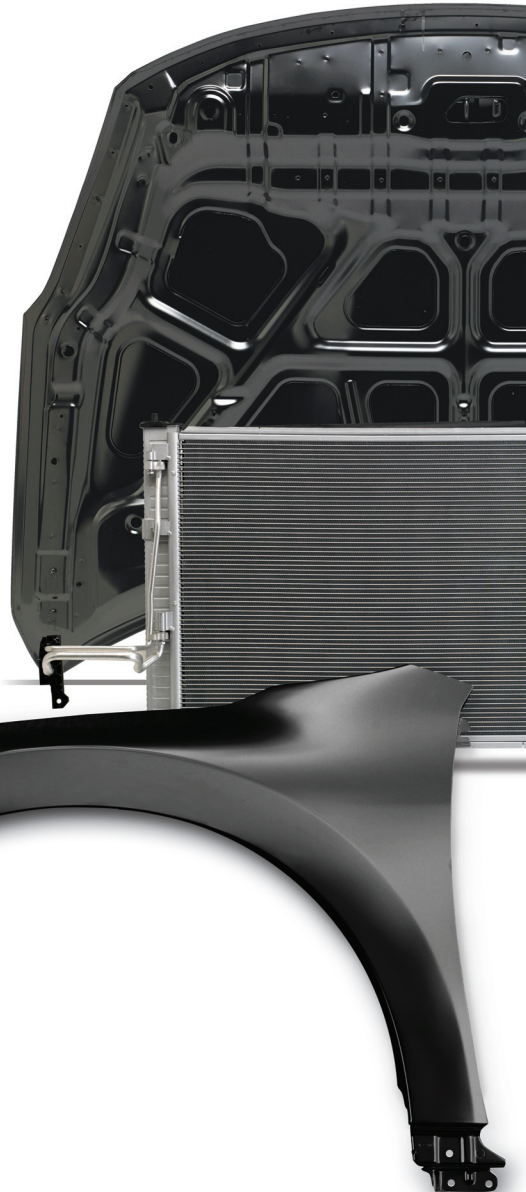
Many parts play an integral role in your vehicle's overall structural integrity and the function of its safety systems. When new Genuine Nissan Parts are installed using factory-recommended materials and procedures, they deliver the same structural performance characteristics as the original parts.

Maintains Vehicle Resale Value

The use of new aftermarket, salvage or reconditioned parts may decrease resale value because of potential poor quality, fit, finish, and appearance. Using new Genuine Nissan Parts for repairs can help return your vehicle to pre-accident condition which may help to maintain its value and may be required if you're leasing your vehicle.

Original Manufacturer's Warranty

New Genuine Nissan Parts are the only service replacement parts warranted by Nissan. Damage to your vehicle or its parts caused by the failure of new aftermarket, salvage, or reconditioned parts may not be covered by your Nissan North America new-vehicle warranty.



Trust the Original. Genuine Nissan Parts.

7

Know your rights

Peace of mind comes from educating yourself and knowing your rights on collision repair before an accident happens. When it comes to selecting the right parts for your vehicle, the only way to truly know what you are getting is to use new Genuine Nissan Parts

Contact:

Your Insurance

Company Representative

- Find out exactly what your policy covers, now, before you need it
- Find out what is covered if your vehicle is damaged and needs repairs
- Find out if your policy allows choices when it comes time to choose parts to repair your vehicle

Your State

Insurance Commissioner

- Check the laws and regulations that govern insurance policies
- Check the laws and regulations that govern collision centers
- Know your rights as a consumer when it comes time to repair

Nissan North America Position Statement

Nissan parts used to produce the vehicle are thoroughly tested during the vehicle development process. Nissan vehicles are subjected to a battery of stringent internal tests as well as Federal Motor Vehicle Safety Standards (FMVSS) tests to help ensure all individual components work as a Highway Traffic Safety Administration). New Genuine Nissan Parts meet our stringent requirements for fit, finish, structural integrity, and corrosion protection. Nissan strongly recommends the use of new Genuine Nissan Parts for collision repair. Use of new aftermarket, salvage, or reconditioned parts could result in diminished value of the vehicle and increased damage in a subsequent collision. Further, these types of parts are not warranted by Nissan, and any damage caused by their use is excluded from Nissan's warranty coverage.

For more information please visit:
Collision.NissanUSA.com

NISSAN
CERTIFIED COLLISION
REPAIR NETWORK



Choose the Nissan
Certified Collision Repair Network

The Nissan names, logos and slogans are trademarks owned by or licensed to Nissan Motor Co. Ltd. and/or its North American subsidiaries.

Always wear your seat belt and please don't drink and drive.

©2022 Nissan North America, Inc. All rights reserved.